



# What is Flexible Stone(MCM)?

**Flexible Stone,also known as Flexible Tiles or Soft Tile.**

Its academic name is "Modified Inorganic Powder  
Composite Material (**M**odified **C**lay **M**aterial)"

**Building exterior wall decoration material**







## Product introduction

### **Project Regular-use Series is fully**

upgraded from texture, color and pattern. The exquisite patterns and textures are original and rough, profound and thought-provoking. It has the advantages of large size, light weight, flexible and bendable, convenient installing and low cost, and can be used interior and exterior.



## Concrete Board

Regular size: 600\*3000mm、1200\*3000mm

Thickness: 4mm

Not limited to the following colors



白色/White 100



水泥灰色/Grey 725



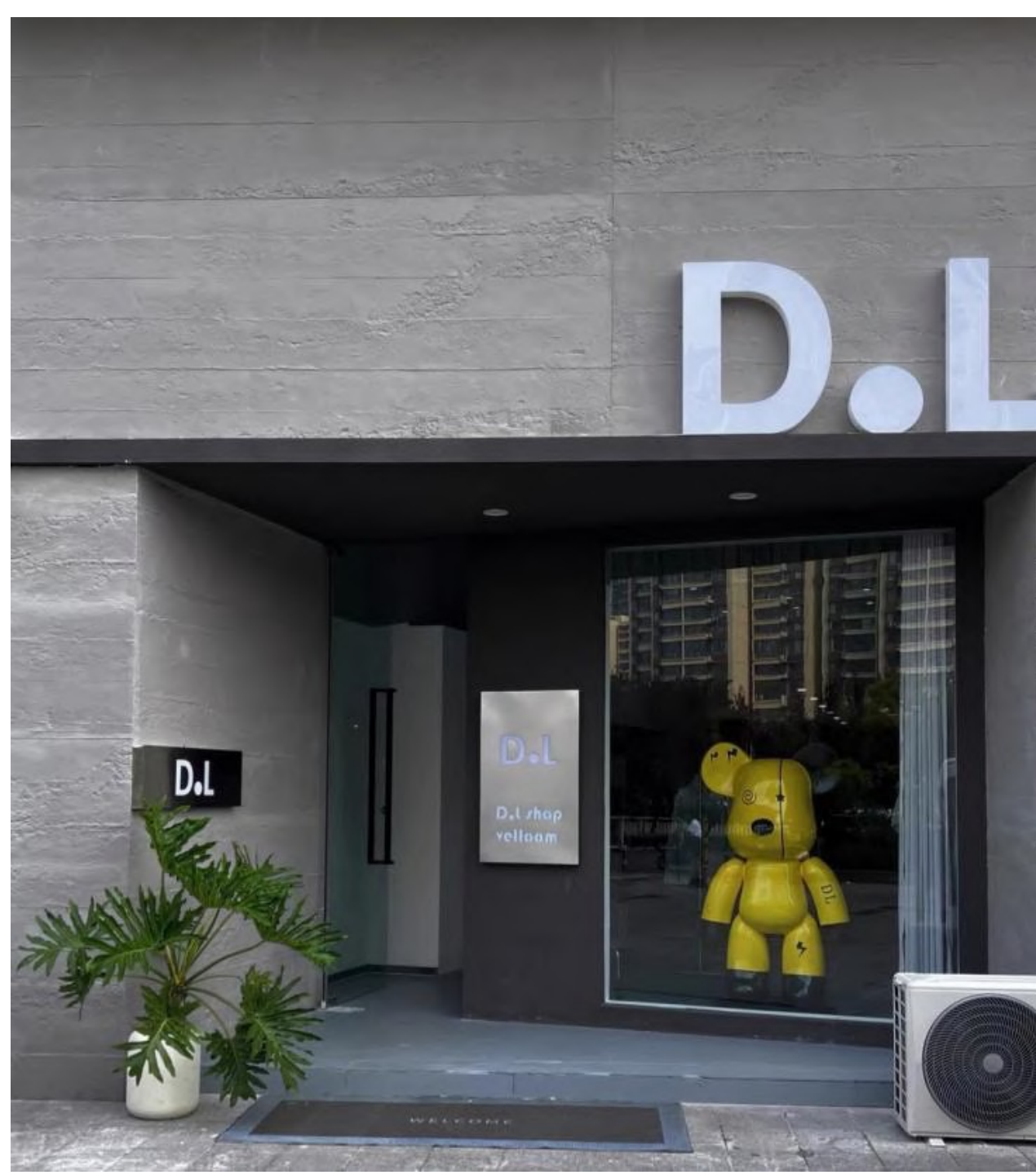
中灰色/Medium Grey 130



灰色/Grey 107









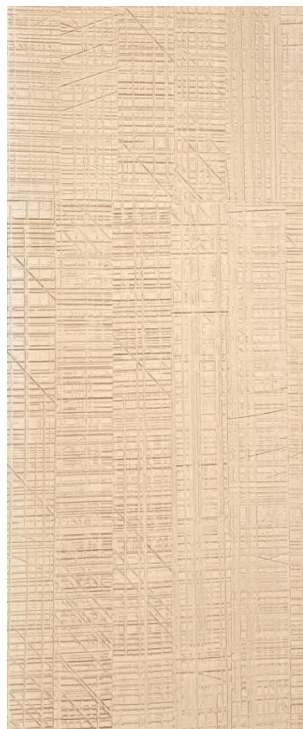
## Sawing wood

Regular size: 600\*3000mm、1200\*3000mm  
Thickness: 3-7mm

Not limited to the following colors



白色/White 100



桦木色/Birch color 086



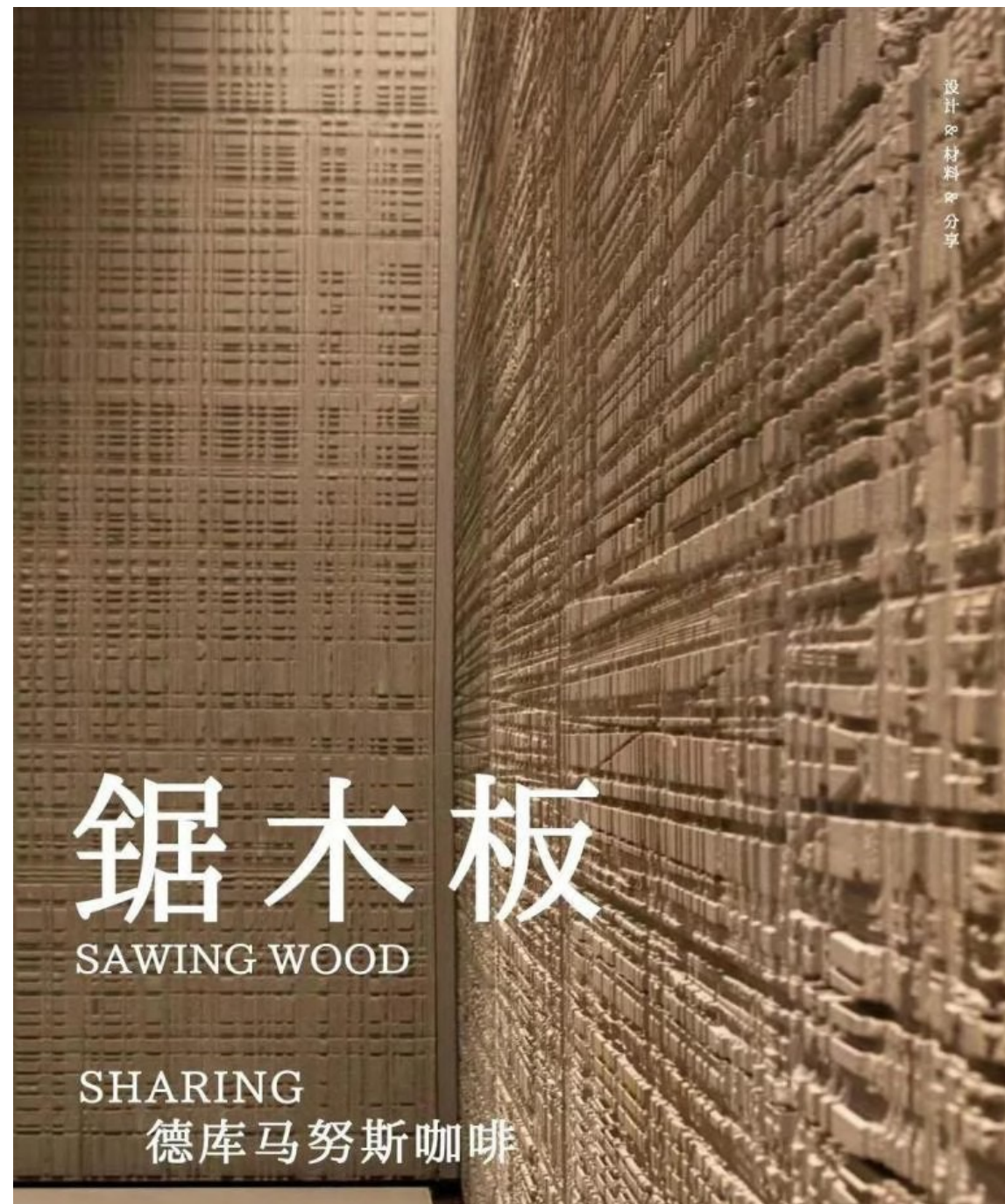
深棕色/Dark brown 062



深灰色/Dark Grey 043







设计 & 材料 & 分享

# 锯木板

SAWING WOOD

SHARING

德库马努斯咖啡



## Starmoon Stone

Regular size: 300\*600mm 、 600\*1200mm、 1200\*2400mm厚度  
/Thickness: 3-10mm

Not limited to the following colors



白色/White 100



深灰色/Dark Grey 043



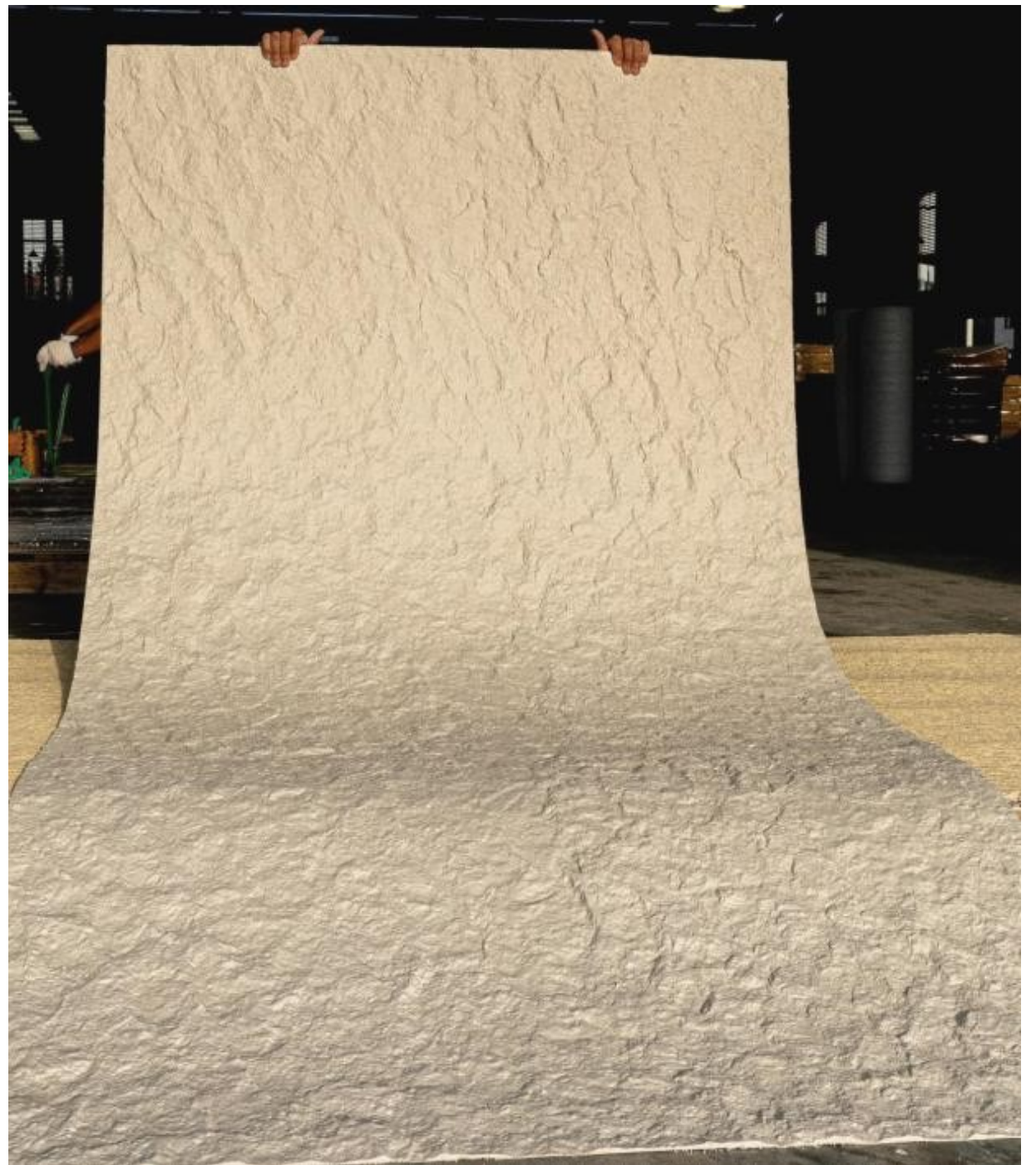
深土黄色/  
Deep Khaki 058



黄色/Yellow 240









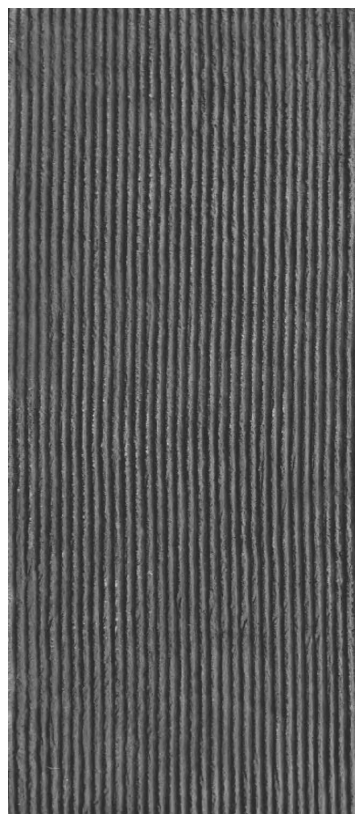
## Round Line Stone

Regular size: 600\*1200mm、600\*2700mm、1200\*2700mm厚度  
/Thickness: 4-9mm

Not limited to the following colors



白色/White 100



深灰色/Dark Grey 043



米黄色/Begie 215









## Oman Linear stone

/Regular size: 600\*1200mm、600\*2400mm、1200\*2400mm  
厚度/Thickness: 4-10mm

不限于以下颜色

Not limited to the following colors



白色/White 100



黄色/Yellow 240









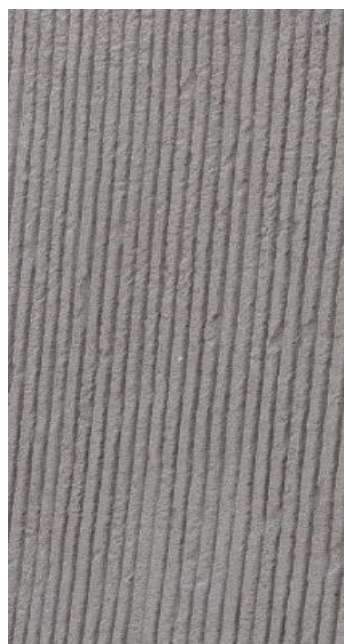
## Square Line Stone

Regular size: 600\*1200mm、1200\*2400mm、1200\*2700mm  
厚度/Thickness: 3-10mm

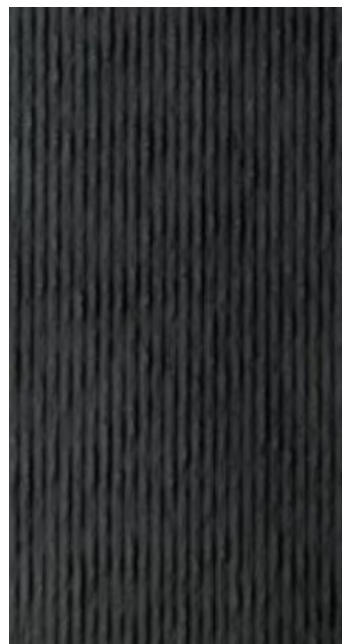
Not limited to the following colors



白色/White 100



水泥灰色/Grey 725



深灰色/Dark grey 043









## Line Stone Board

Regular size: 300\*600mm、600\*1200mm、1200\*2400mm  
Thickness: 3-10mm

Not limited to the following colors



白色/White 100



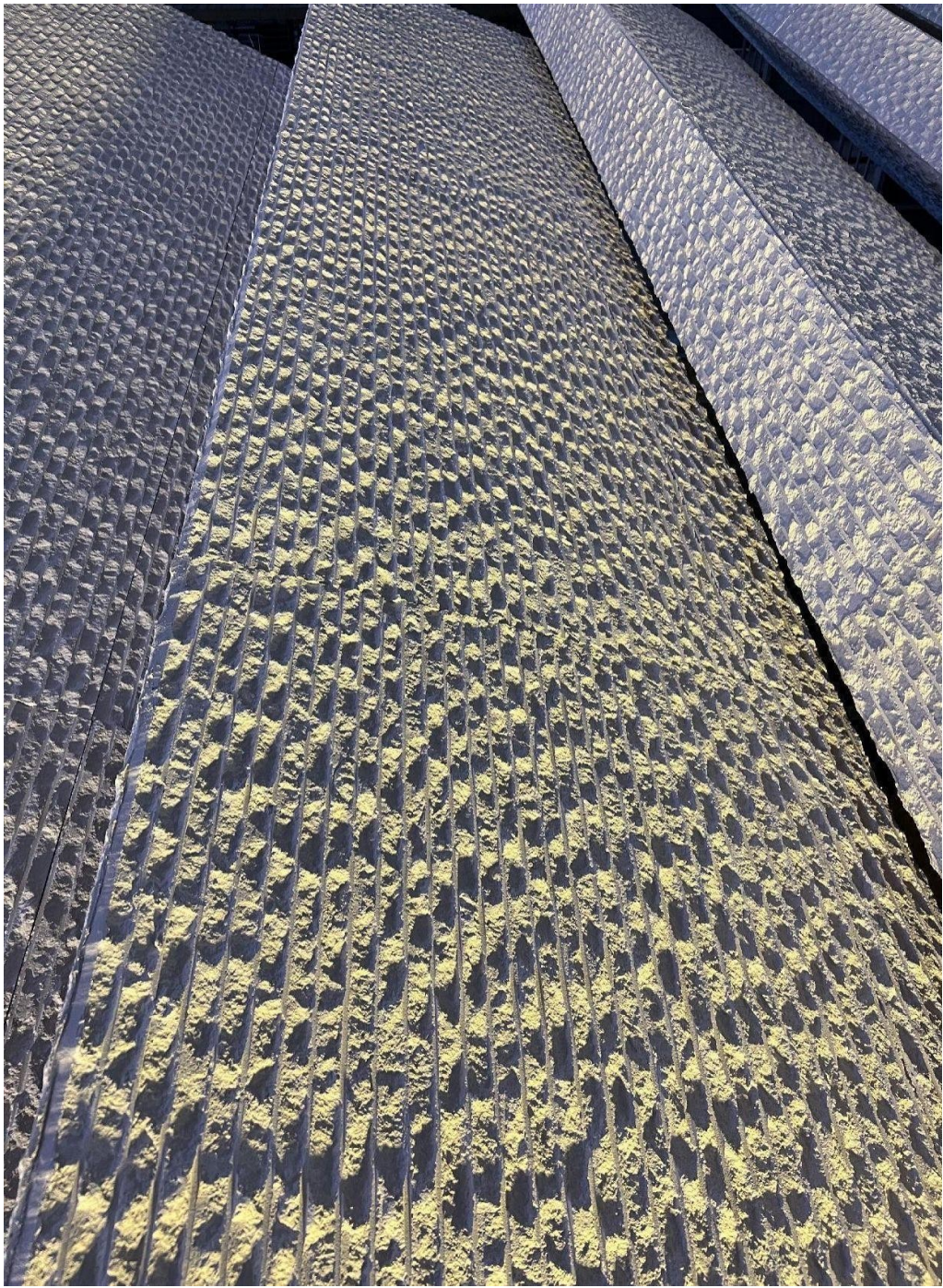
深灰色/Dark Grey 043



黄色/Yellow 240









## Rough Granite

Regular size: 300\*600mm、600\*1200mm、1200\*2400mm

Thickness: 2.5-5mm

Not limited to the following colors



浅灰色 Light gray 052



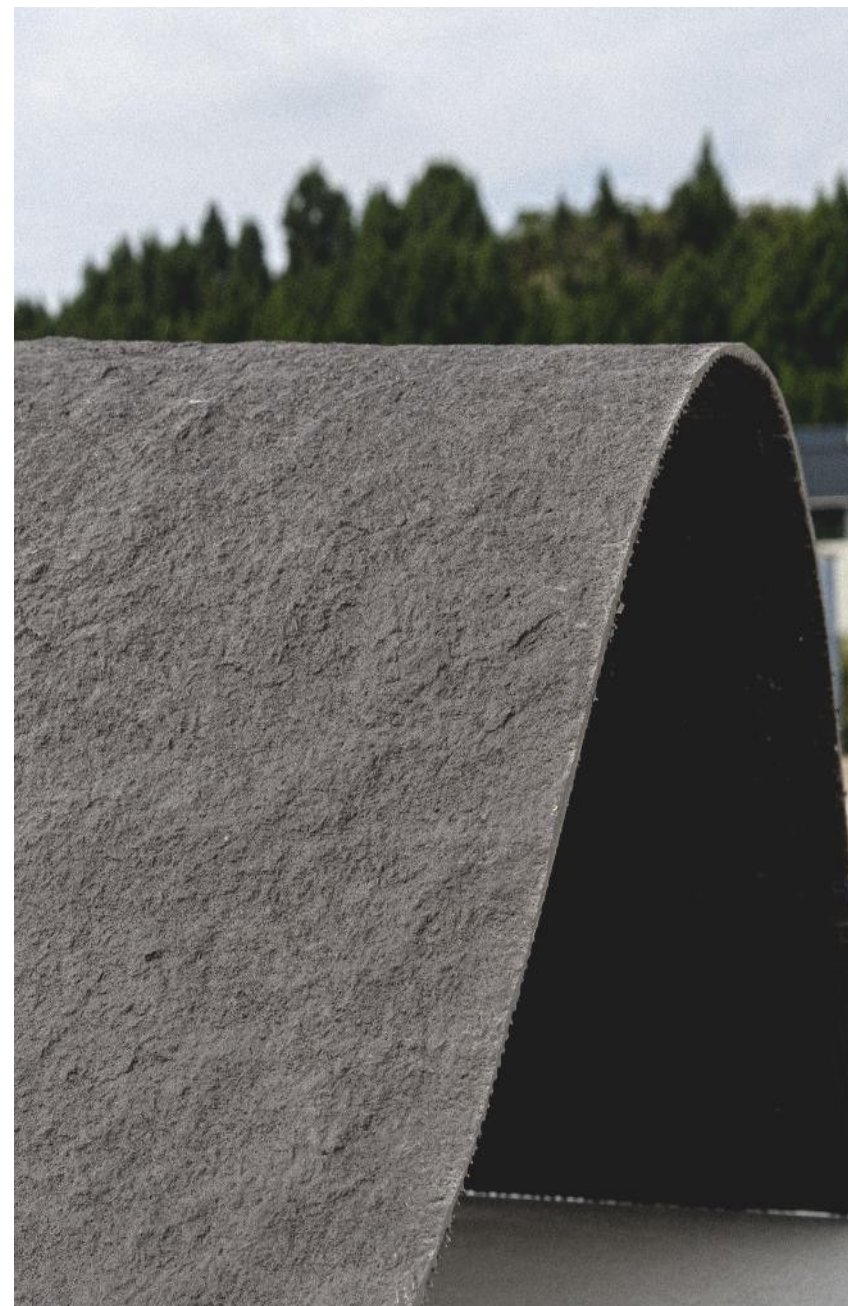
白色/White 100



深灰色/Dark Grey 043



土黄色/khaki 1360









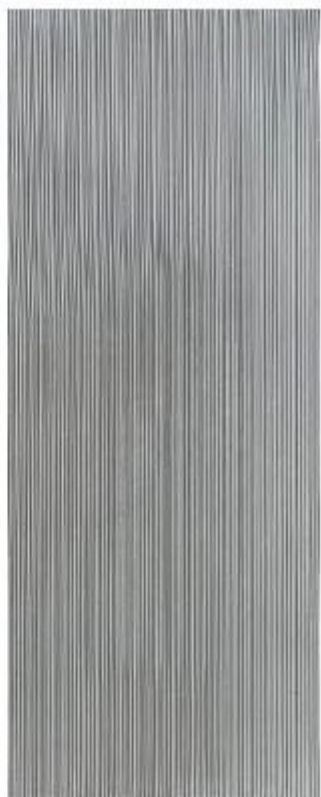
## Fine Line Stone Board

/Regular size: 300\*600mm、600\*1200mm、1200\*2400mm  
Thickness: 3mm

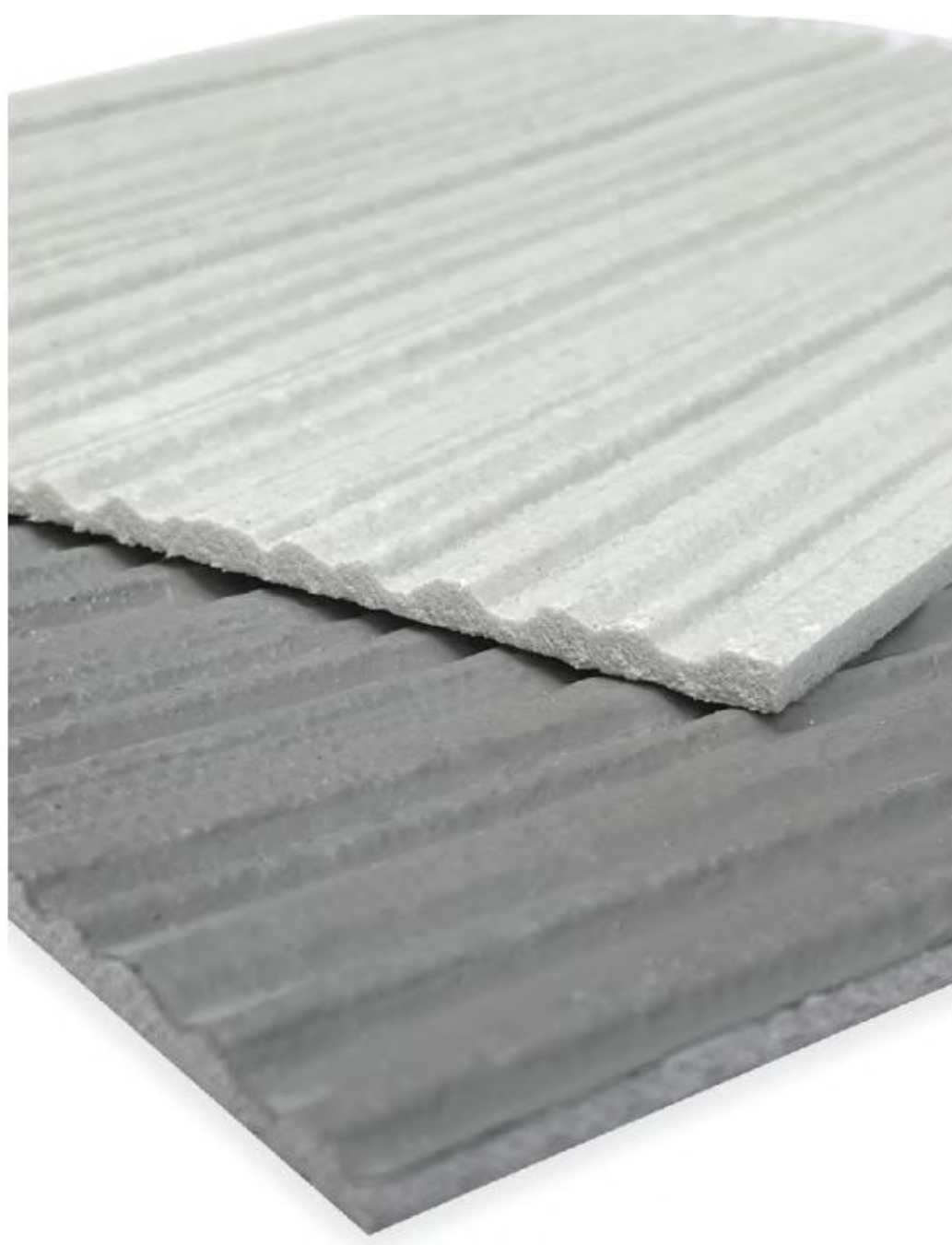
Not limited to the following colors



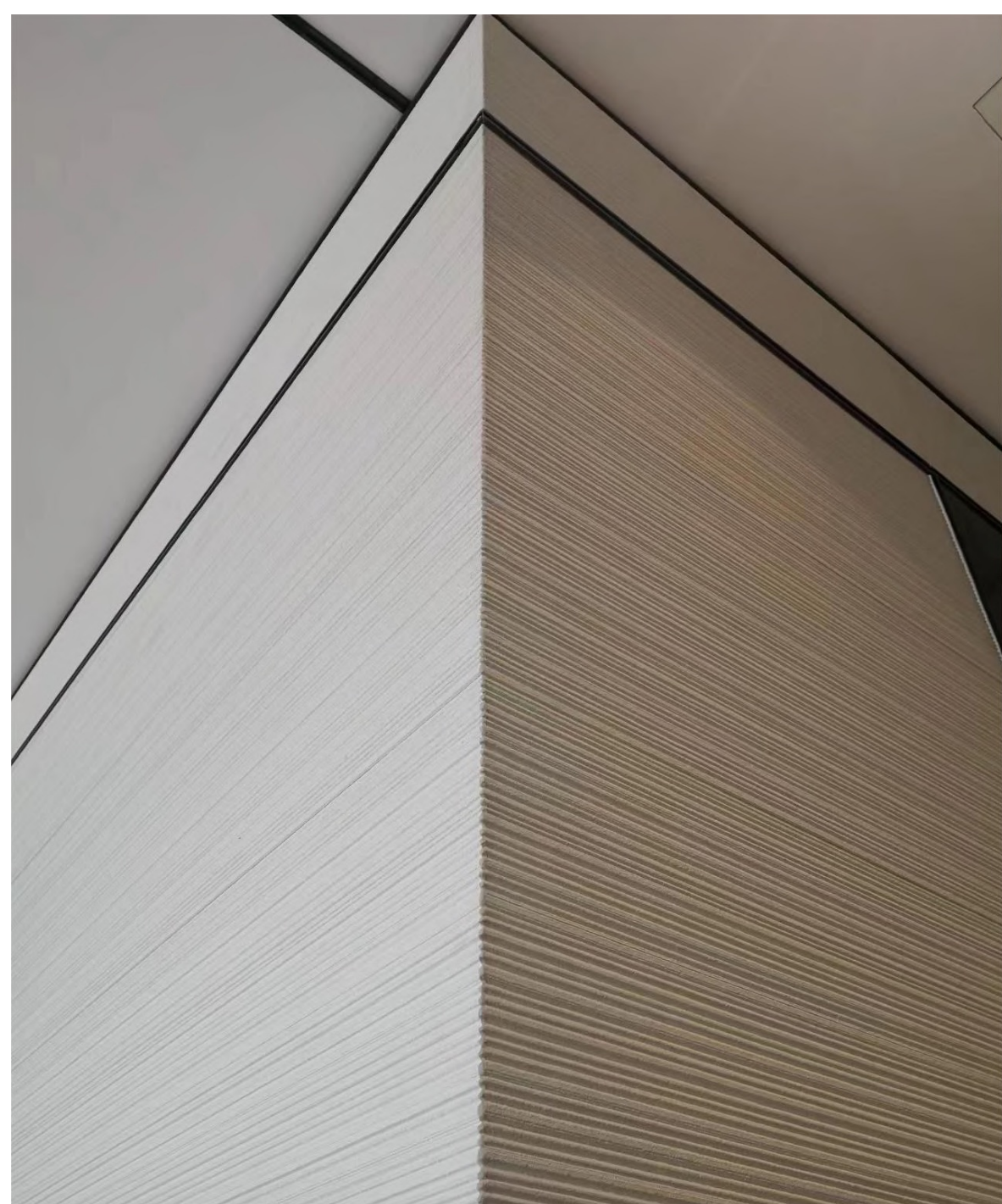
白色/White 100



水泥灰色/Grey 725









## Dacite

/Regular size: 300\*600mm、600\*1200mm、1200\*2400mm  
厚度/Thickness: 3-4mm

Not limited to the following colors



白色/White 100



深灰色/Dark Grey 043



米黄色/Beige 215









## Weaving

Regular size: 300\*600mm、600\*1200mm、1200\*2400mm  
Thickness: 3-5mm

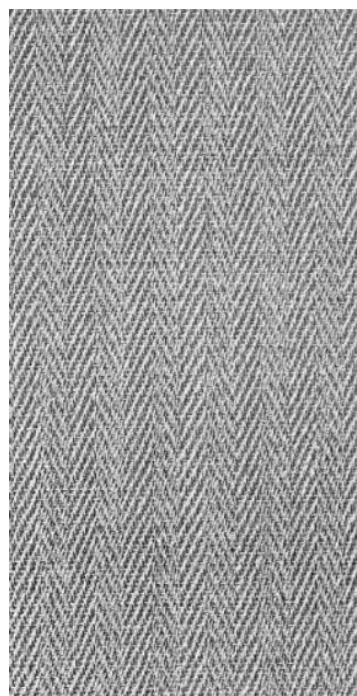
Not limited to the following colors



白色/White 100



黄色/Yellow 240



灰色/Grey 107













# Travertine

Regular size: 300\*600mm、600\*1200mm、1200\*2400mm  
Thickness: 3-4mm

Not limited to the following colors



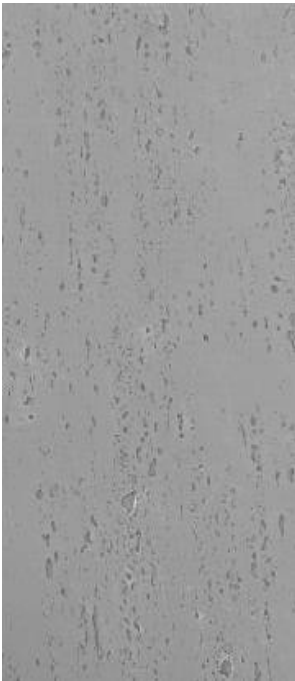
白色/White 100



浅灰色/Light gray 052



米黄色/Begie 215



蓝灰色/Blue Grey 1272



鎏金色/  
White Golden 1112



渐变白色/  
Gradient white 871



黄灰色/  
yellowish gray 221



罗马黄色/  
Roman khaki 1465







# Rammed Earth Board

/Regular size:600\*1200mm、 600\*2400mm、 1200\*2400mm  
Thickness: 3-4mm

Not limited to the following colors



黄色/Yellow 240



白色/White 100



浅中灰/Light medium gray 0622



橙黄/Orange 823



丹霞红/  
Danxia Red 1093



深灰色/Dark Grey 043









## Rockcut Stone

Regular size: 600\*900mm、600\*1200mm、1200\*2400mm  
Thickness: 2-8mm

Not limited to the following colors



白色/White 100



深灰色/Dark Grey 043







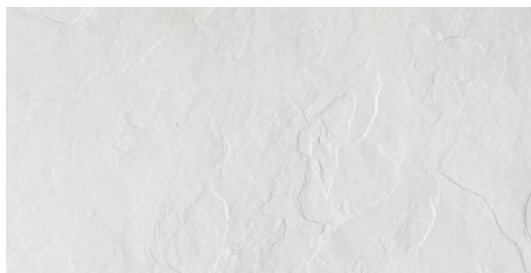


## Slate

Regular size:300\*600mm、 600\*1200mm

Thickness: 3-4mm

Not limited to the following colors



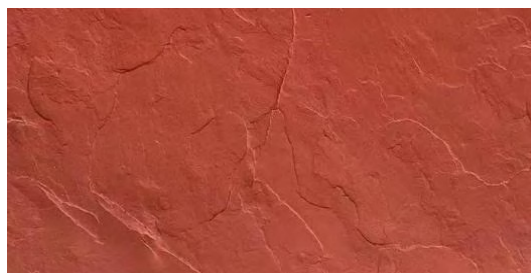
白色/White 100



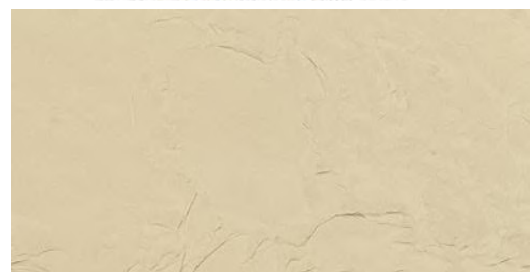
米黄色/Begie 215



浅灰色/Light gray 052



中国红/Red 0224



黄色/Yellow 240



中灰色/Medium Grey 130







*Is born with natural color, elegant  
and rich, and is ideal for urban  
color planning.*





## 布纹石 Cut Stone

常备规格/Regular size:300\*600mm、600\*1200mm、1200\*2400mm  
厚度/Thickness: 3-4mm

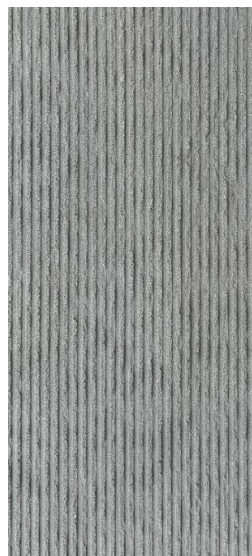
不限于以下颜色  
Not limited to the following colors



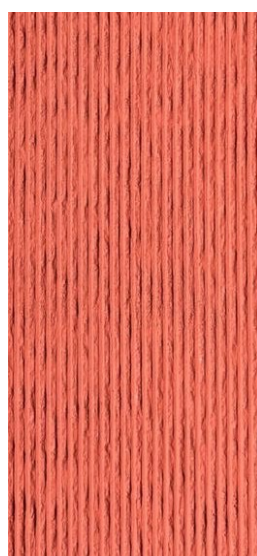
白色/White 100



浅米黄/Light beige 0101



棕灰色/Brown gray 112



橙红色/orange red 1084







*dt*  
*t*

*dt*





## Angola shale

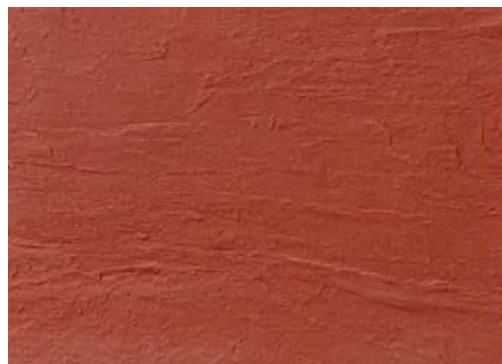
Regular size:300\*600mm、 600\*1200mm

Thickness: 3-5mm

Not limited to the following colors



白色/White 100



红色/Red 1685



黑色/Black 325



深灰色/Black 325



## Muretto Stone

Regular size: 300\*600mm、600\*1200mm

Thickness: 3-9mm

Not limited to the following colors



白色/White 100



浅灰色/Light gray 1272



深灰色/Dark Grey 425









Granite

Regular size: 300\*600mm、600\*600mm、600\*1200mm  
Thickness: 2.5-3.5mm  
Not limited to the following colors



DC-017



DC-020



DC-14082



DC-017









## Facing brick

/Regular size: 240\*60mm

/Thickness: 2.5-3.5mm

Not limited to the following colors



A039



A040



A041



A042

灰色系/Gray Series



A046



A047



A048



A049

红色系/Red Series



A024



A025

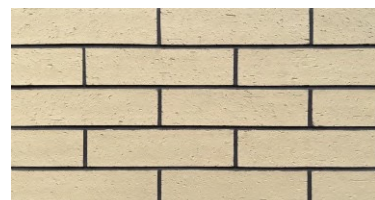
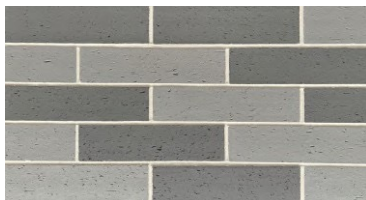


A026



A027

黄色系/Yellow Series









## Imitation Wood

Regular size:300\*600mm、 600\*1200mm

Thickness: 2.5-3.5mm

Not limited to the following colors



No.0869



No.0862





# Flexible Stone ( MCM)

It is an environmentally friendly building decoration material formed by the hybridization of environmentally friendly active clay and environmentally friendly polymer.



**Raw materials:** Various inorganic powders such as ecological white soil (stone), red soil (stone), loess (stone), black soil (stone), purple soil (stone), etc., collected from far away cities and subjected to strict technical testing.

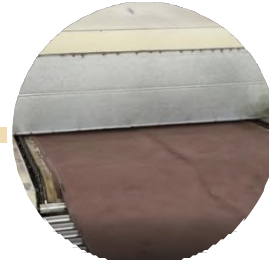
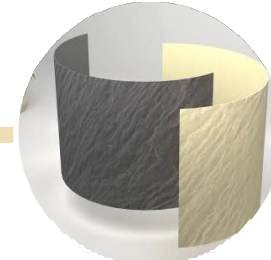
**Modification:** After the raw materials are fully crushed, the inorganic compound surface is coated with organic activity through spray and other methods. The molecular chain of natural soil is extended by more than 30 rational technologies such as nanotechnology and gamma ray to compound and modify it, making it a material with new performance, which has both the durability of inorganic materials and the plasticity of organic materials.

**Forming:** Based on various natural material textures or historical handicraft elements, modern art creation elements, etc., using cutting-edge photosensitive mold cloning technology to create, under photochemical isomerism and controlled curve temperature, any shape can be formed.



## Flexible Stone ( MCM ) productive process

1PC = 30PCS



### Raw material collection

Collect inorganic compound such as soil and stone powder from nature

### Mechanical treatment

Color separation and pulverization of inorganic compound to form microscopic inorganic powder

### Modification

Surface coating modification of particles using fluorinated surfactants to form environmentally friendly active soil

### Produce

Adopting self-developed fully automated production line modeling

### Performance tuning

The flexibility and hardness of the finished product are adjusted through curve temperature and modifiers

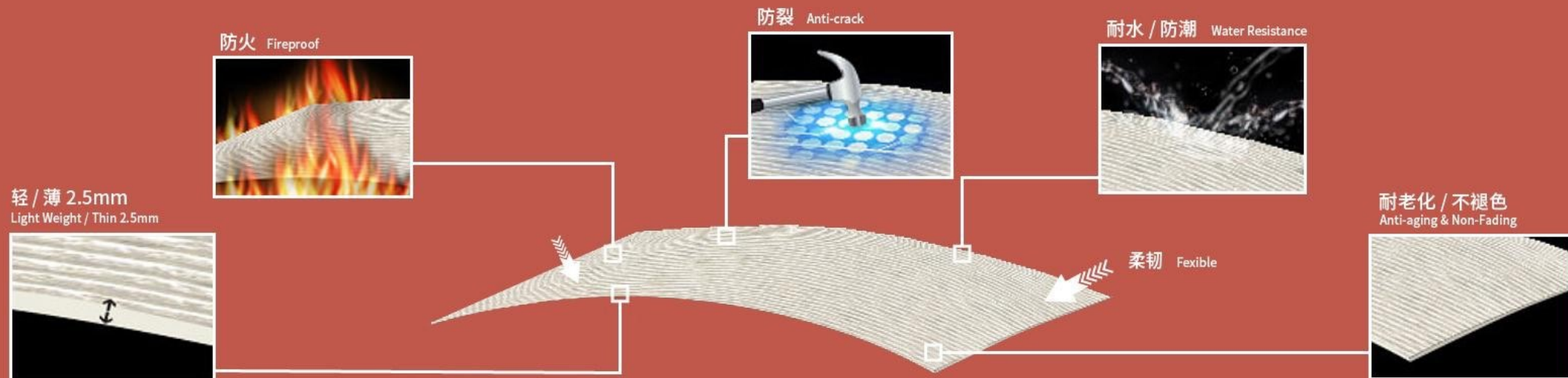
### Forming

Forming sheets, rolls, blocks, plates or profiles



# Features

- 1. Thin and light:** Each piece has a thickness of only 2-6mm and weighs only 3-8 kilograms/square meter. It is easy to install and has high safety, making it suitable for high-rise buildings.
- 2. Soft, earthquake resistant and crack resistant:** can be directly curved, with good ductility, earthquake resistant and crack resistant. Suitable for irregular buildings.
- 3. Anti fouling and self-cleaning:** special nano glazed surface, self cleaning technology with net load.
- 4. A-level fire protection:** A-level fire resistant material.
- 5. Anti freezing and thawing, acid and alkali resistance, durability, and non fading:** The freeze-thaw test has been conducted 100 times, and the accelerated aging test has been conducted for over 4000h. The surface is free from powdering, cracks, peeling, and discoloration, equivalent to outdoor use for more than 50 years.
- 6. Safety:** Allow the building to breathe freely and not fall.





Product Features  
Excellent Performance

▼

Performance Comparison	Stone	Ceramic tile	Paint	Aluminum Composite Panel	Terracotta panels	Flexible Stone
Durability	Durable	Durable for 20 years without discoloration	easy to fade	Ordinary	Durable for 20 years without discoloration	<b>Durable, no Chalking or discoloration over 50 years</b>
Environmentally	Not environmentally friendly, deforestation	Not environmentally friendly. The production process emits a large amount of carbon dioxide and waste residue	Not environmentally friendly Pollution emissions during the production process	Not environmentally friendly Pollution emissions during the production process	Not environmentally friendly High temperature sintering is required, and a large amount of exhaust gas needs to be discharged	<b>Very environmentally friendly. There is no discharge of "three wastes" during the production process. National three-star green building materials</b>
Fire performance	-	Fireproof	-	Not fireproof	Fireproof	<b>A-grade fireproof</b>
Safety	Unsafe	There are safety hazards	safety	There are safety hazards	There are safety hazards	<b>Safe, light and soft, earthquake resistant and crack resistant</b>
Convenience	Inconvenient construction	Inconvenient construction	Very convenient and fast	Inconvenient construction	Inconvenient construction	<b>Very convenient and fast</b>
Expressive	Only stone products	Limited expressive	Limited expressive	Limited expressive	Single color and variety	<b>The expressive power is very rich. Imitation of stone, wood, leather, and metal can be achieved.</b>
Cost performance	Expensive, superior stone, market value more than 100 dollars/square	Cheap	Cheap	Expensive	High comprehensive cost	<b>High cost-effectiveness, easy construction, logistics savings, short construction period, and labor saving</b>



## Analysis of Similar Products

Category	Technical Principles	Quality	Features
Flexible Stone(MCM)	Inorganic powder modification technology, made by hybridization of environmentally friendly active soil and environmentally friendly polymer	superior	It combines the durability of inorganic materials with the plasticity of organic materials. Beautiful, environmentally friendly, durable (aging resistance test over 3500 hours), A-grade fireproof.
Non active powder flexible stone	Made by mixing fine sand/calcium carbonate and propylene lotion	inferior	Applied to exterior walls, it is prone to cracking and discoloration, and its lifespan is similar to that of ordinary coatings; There is a 10 times difference in service life compared to MCMFlexible Stone.
Flexible Stone coating	Material and process of genuine stone paint	inferior	Easily chalking and discoloring. Generally, artificial aging and weather resistance experiments are less than 2000 hours, which is not environmentally friendly.
Cement Flexible Stone	Synthesized with cement and waterproofing agent	inferior	Applied to exterior walls, it will turn alkaline under the action of rainwater, making the building dull and greatly reducing its aesthetics.